

*Lakeside Homes*

# CAMELLIA



## CONTEMPORARY FARMHOUSE

*Gracious living with modern amenities and energy efficiency*

New construction • 4 bedroom • 2.5 bath • 2,957 ft<sup>2</sup> • 3+ car garage

*The Camellia is part of a series of collaborations between Lakeside, the area's premier luxury home builder, and Karen Kempf Interiors, the highly sought-after interior design company. This energy-efficient, contemporary farmhouse delights from every angle and is well-appointed for contemporary living.*



*Inquiries*

Marie Kaysen

(262) 292-2305

[lakesidedevelopment.com](http://lakesidedevelopment.com)

*Products have been intentionally chosen for their quality, style and superior reputation.*

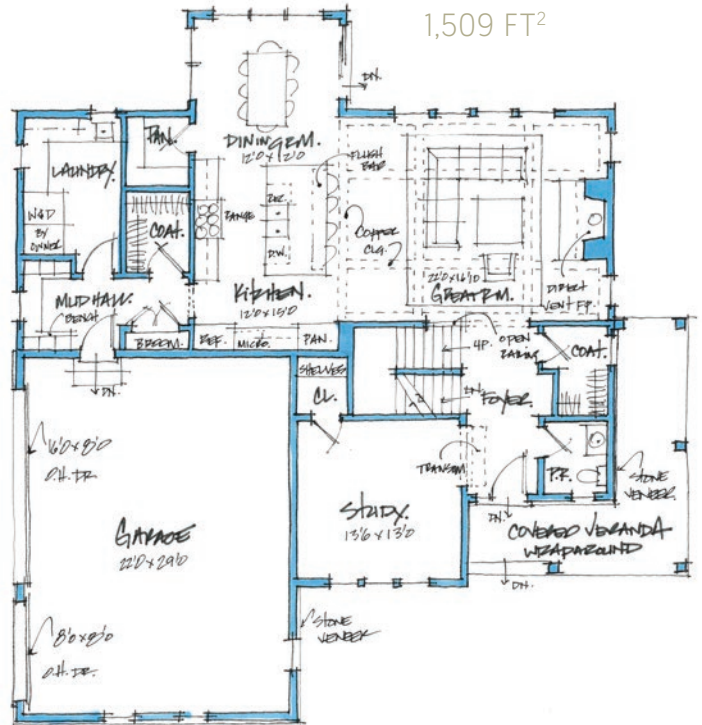
## EXTERIOR FEATURES

- Focus On Energy® Qualified Home
- R-21 High-Density Fiberglass Batt Insulation at walls
- R-50 Loose Fill Cellulose Insulation at ceiling where possible
- Reinforced 9'-0" Poured Concrete Foundation
- LP® Smartside® Siding and Trim
- Halquist Thin Cut Stone
- Pella® Impervia® Casement Windows
- C.H.I. Stamped Carriage House Garage Doors
- Concrete Drive, Sidewalk, and Patio

## INTERIOR FEATURES

- Interior designed by Karen Kempf Interiors
- Coffered Ceiling in the Great Room
- Shaw Inspirations Engineered Hardwood Floor
- Dura Supreme Cabinetry w/Soft Close Doors and Drawers
- Quartz Countertops Throughout
- Jenn-Air Appliances
- Superior Direct Vent Fireplace

**FIRST FLOOR:**  
1,509 FT<sup>2</sup>



**SECOND FLOOR:**  
1,448 FT<sup>2</sup>

